

Brochure



Innovation, more choices

The MFP redefined by HP





Do more in less time with HP's award-winning line-up of Enterprise MFPs



Business-Class Printers

When searching for the right multifunction product for your enterprise, look no further than one of the leading names in the information technology industry. HP garnered the Buyers Lab Outstanding Color Printer/MFP Line of the Year award for the fourth year in a row. See how HP is redefining the MFP in this short [video](#).

Mobilise your workforce with easy, reliable mobile printing. HP's innovative, cloud-ready line-up with intuitive document management features effortlessly transforms paper into digital data. Our top-of-the line fleet management tools make it easy for IT to configure, control and customise a versatile fleet in fewer steps. And every HP MFP is designed to safeguard your data with robust security features. Rely on the No. 1 business printer brand—HP LaserJet—backed by 30 years of laser-printing experience.¹



Mobilise printing

Empower on-the-go employees by helping them enable secure printing from their smartphones, tablets and laptops.

In the office, mobile users can print to networked HP MFPs through a cloud print service, or print directly to devices using peer-to-peer HP wireless direct printing or HP touch-to-print.



Give your workforce the freedom to print from their mobile devices—HP makes it easy

Users want easy and reliable printing from any mobile platform or operating system. At the same time, IT administrators need control over network access and printer output to help protect confidential information and manage printing costs. HP leads the mobile printing movement by addressing more mobile print environments than any other printer vendor.² HP's mobile printing offering is a unified "all HP" solution with no additional third-party software or service fees required.

Most HP LaserJet and Officejet Enterprise MFPs offer built-in support for easy printing from your mobile device, and those that don't are easily upgradable. Print from mobile devices in a number of ways:

- **Directly to your local MFP**—HP currently offers the broadest support for embedded print functionality across Apple® iOS (AirPrint™), Samsung Android and Windows® 8, which means in most cases, employees won't have to download an app. For mobile devices without built-in print support, printing is just as simple, but users will first need to download the HP ePrint app or HP ePrint software.
Both HP wireless direct³ and NFC touch-to-print⁴ technologies enable a secure peer-to-peer connection to your MFP, allowing users to print without accessing your company network. Some HP enterprise-class MFPs feature integrated wireless direct and touch-to-print functionality.⁵ And you can easily add this capability to most existing HP devices with HP mobile printing accessories.
- **Through the public cloud**—Print from virtually anywhere using a mobile app, Windows or Mac driver, or just by forwarding an email. Each HP ePrint-enabled device is assigned an exclusive email address. Use this email address to send documents or photos to the MFP once it's connected to the Internet.
- **Within a secure enterprise**—Print from your mobile device on company-networked printers and at thousands of public print locations worldwide, using HP ePrint Enterprise.⁶ Highly manageable and flexible to fit your existing infrastructure, HP ePrint Enterprise keeps documents and data safeguarded in your network.⁷

For more information and a demonstration of the simplicity of HP's mobile printing feature, watch this short [video](#).



Work smarter

Advance your workflow with intelligent scanning and digital sending capabilities. Easy to set up and intuitive to use, HP MFPs help save time and cut costs.

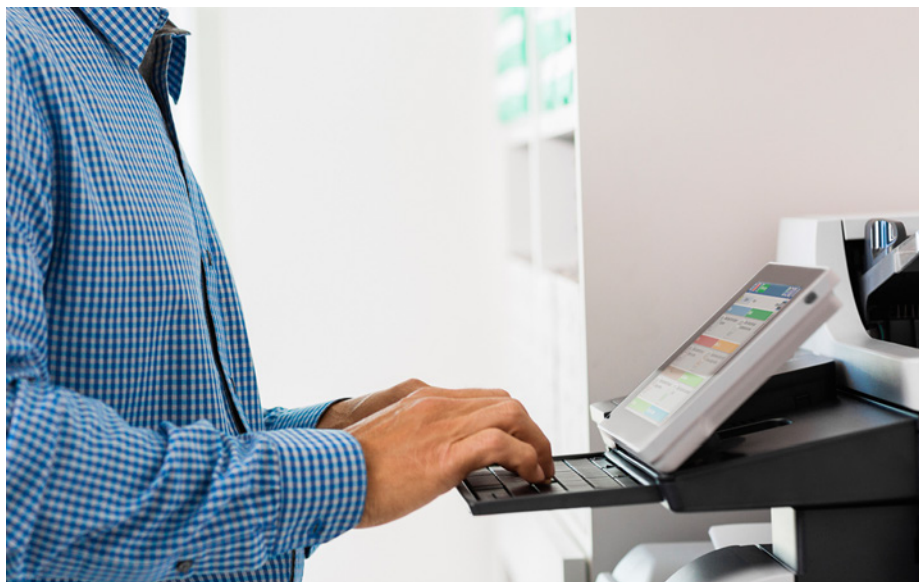
Transform the way you work. HP's flow MFPs feature advanced capture and routing, scan, search and editing capabilities, plus large pull-out keyboards for simplified data entry.



The 20.3 cm (8-inch) colour touchscreen control panel on all HP flow devices makes task execution simple and intuitive.



A large pull-out keyboard lets workgroups add metadata to every project quickly and easily with fewer mistakes.



Accelerate the way you work with first-rate workflow features

Moving from a paper-based office to one that is digitised can help you reduce paper use and storage requirements, quickly find the information you need, add efficiency to your processes and can help you meet regulatory requirements. Integrating paper documents into the digital workflow is easier than ever with HP's advanced scanning and sending options. All HP Enterprise MFPs scan in full colour—even the black-and-white models. And HP minimises the impact of digital sending by keeping file size small, saving you storage space and network bandwidth while maintaining quality and usability. Watch these short videos to see how these workflow features have helped in environments like [healthcare offices](#) and [financial institutions](#).

Simple to set up, easy to use

The user interface of the HP Easy Select 20.3 cm (8-inch) colour touchscreen control panel is the same across all HP LaserJet and Officejet Enterprise MFPs, which provides a familiar and consistent user experience that helps reduce training costs and helpdesk calls. Capture the right content every time—HP's advanced image preview feature allows you to preview, zoom, add, delete and reorder images at the device's touchscreen control prior to saving or sending scans.⁸ Quick Sets launch one-touch workflows at a touch of the control panel.

Scan with ease, speed and precision with HP LaserJet and Officejet Enterprise flow MFPs

HP flow MFPs are optimised for scanning and offer advanced workflow capabilities. They help accelerate your work team's performance and provide the tools—like a colour touchscreen and large pull-out keyboard—needed to capture the right content quickly, easily and accurately.

A high-capacity ADF (automatic document feeder) offers single-pass, two-sided scanning, super-fast scan speeds, and automated image enhancements, so users can tackle big jobs in less time. You no longer have to use the flatbed scanner to copy odd-size material (such as checks) one at a time or to edit files after they're scanned. Users can simply load a stack of different-sized documents into the ADF, choose the workflow type—save to SharePoint®, for example—and the flow MFP will do the rest. Any blank pages can be automatically detected and removed. The MFP determines whether each page is scanned in landscape or portrait, and can flip pages, so the image in the file is always correctly oriented. Auto-page-crop automatically sets the scan to the paper edges. Auto-tone sets contrast, brightness and background removal for each page.

HP EveryPage employs the same ultrasonic technology that bank ATMs use to accurately count each bill, helping avoid scanning errors or missed pages—even if the weight, size or condition of pages varies. Built-in optical character recognition (OCR) allows you to convert scanned images to common file types with editable and searchable text. Send scanned files directly to Microsoft® SharePoint folders, email, fax, or network folders, with no need for middleware.



Manage your fleet

Monitor and manage your entire fleet with a single, comprehensive solution—HP Web Jetadmin. And the HP Universal Print Driver provides IT with all the tools they need with one common driver.

Change happens, you're covered. Protect your investment with HP FutureSmart firmware.



Monitor your fleet and help reduce your costs

IT needs simplified tools to monitor, customise and control their printing fleet, while business owners need to control costs. HP offers a comprehensive suite of fleet-management solutions with administration features that let you configure and upgrade MFPs on your schedule.

Keep a close watch, even from afar

HP MFPs are supported by the robust, enterprise-class solution, HP Web Jetadmin.⁹ IT departments can remotely monitor and manage printing devices on the network, report on device usage and activity, and manage and order supplies. HP Web Jetadmin features a simple interface that allows for right-click and drag-and-drop actions, supplies management and proactive troubleshooting—and also includes customisable reporting features. Administrators can realise cost-saving and security initiatives, with, for example, the ability to limit colour output and enforce security policies across the entire fleet. In addition, printer settings can be adjusted to save toner and times can be set for devices to go into sleep mode to save power. These features can help you improve productivity and protect your investment while making it “greener” to deploy your MFPs.

Simplicity all around

Make it easy for everyone to print with one common driver. The HP Universal Print Driver (UPD) enables both mobile Microsoft PC users and traditional desktop users to self-sufficiently access the full features of nearly every HP device in your managed printing environment.¹⁰ Empower IT by dramatically reducing the number of drivers they have to manage—and by giving them the tools they need to improve efficiency. With the HP UPD, your IT team can easily adjust device settings to help reduce printing costs, improve security and help meet environmental goals. Use the HP UPD in tandem with HP Web Jetadmin to create fleet-wide managed printer lists, reports and more.

Work with the future in mind

Upgrade your HP Enterprise MFPs on your schedule, with HP FutureSmart firmware.¹¹ Protect your printing investment by upgrading to new features, such as workflow and security enhancements, without having to purchase new hardware. HP FutureSmart also helps reduce the time and cost to train new users. A consistent user interface and menu design across all HP FutureSmart devices makes the user experience intuitive and familiar.

HP MFPs are designed to be compatible with emerging solutions, so you can cost-effectively upgrade and increase capabilities as needed. MFPs with a hardware integration pocket allow you to integrate security solutions, such as card and badge readers.¹² HP's Open Extensibility Platform (OXF) creates a unified environment for software solutions that run on your HP MFPs—providing sound investment protection, consistency for end users and easier management. These HP innovations can help your MFP remain state-of-the-art long into the future.

For more information on the innovative HP OXF and FutureSmart firmware, watch this [video](#).



Maximise security

Safeguard your sensitive data with HP's robust security features. Add features to your MFPs as you need them through the hardware integration pocket, and enjoy the peace of mind HP offers with its award-winning security solution, HP Imaging and Printing Security Center.



Safeguard your fleet of HP devices with the solution Buyers Laboratory LLC calls trailblazing—HP Imaging and Printing Security Center¹³



Take the worry out of printing

As capabilities expand and devices become more integrated into your workflows, device security becomes increasingly important. HP Enterprise MFPs feature a number of options to help safeguard against undesired access.

- **Protect data in transit**—You can protect sensitive business information in transit over the network using various features like IPsec, IPP over SSL/TLS or encrypted PDFs and email.
- **Protect data residing on your MFP**—Product models that include the embedded HP High Performance Secure Hard Disk provide AES256 hardware encryption. And models that include a Solid State Disk offer AES256 firmware encryption for your data. As an added security measure, you can even securely erase the disk.
- **Protect access to the MFP**—Multiple embedded authentication methods integrate with your existing infrastructure to protect access to the MFP and its functions. These include Windows/Kerberos, LDAP and user PIN authentication. You can disable host USB ports, network ports and other physical ports to prevent unauthorised use. Additional security solutions can be added through the built-in hardware integration pocket.
- **Prevent theft**—You can protect the physical device and the hard disk from theft with an optional cable security lock.

Gain control of your fleet

The optional HP Imaging and Printing Security Center (HP IPSC) is an award-winning, policy-based solution that helps you increase security, strengthen compliance and help reduce risk across your imaging and printing fleet.¹⁴

- **Deploy and monitor** devices by applying a single security policy across the fleet.
- **Achieve baseline security** with the HP Best Practices Base Policy—no security expert required.
- **Secure new HP devices** as soon as they are added to your network and automatically configure settings to comply with your corporate security policy with HP Instant-on Security.¹⁵
- **Actively maintain and verify compliance** with your defined security policies by using HP IPSC automated monitoring and risk-based reporting.

For environments where few devices are deployed, IT may choose to manage each device individually via the HP Embedded Web Server management interface, which employs HTTPS for encryption and has access controls. In addition, HP provides security wizards to assist in proper security setup.

Meet the MFP, redefined by HP

HP LaserJet Pro MFPs

Reliable and easy to use, these laser all-in-one devices deliver best quality output on plain paper and offer the core workflow features many small workgroups are looking for. Some are supported by HP UPD and have core configuration, security and monitoring features that can be managed via HP Web Jetadmin.



Touch convenience
3.5" colour touchscreen
for core workflow tasks



Professional prints
Best-quality colour
output on plain paper
for office use and
marketing collateral

[See all Pro MFPs](#)

HP LaserJet and Officejet Enterprise MFPs

These workhorses are perfect for larger teams whose workflow and management needs are more sophisticated. They support HP's enterprise solutions and offer robust security options along with advanced fleet monitoring, management and reporting.



Data protection
Advanced security options
and configurations, full
LDAP features



On-the-go printing
Print from mobile devices
using optional touch-to-print⁴
technology or peer-to-peer
wireless direct printing³

[See all Enterprise MFPs](#)

HP LaserJet and Officejet Enterprise flow MFPs

The industry's first scan-optimised multifunction devices, HP flow MFPs streamline complicated workflows with built-in OCR, embedded scan-to-SharePoint® and scan-to-cloud capabilities.



Simplify tasks
Easily manage jobs and
add file information more
efficiently, using the
intuitive touchscreen and
large keyboard



On-the-go printing
Print from mobile devices
using optional touch-to-print⁴
technology or peer-to-peer
wireless direct printing³

[See all Enterprise flow MFPs](#)

Notes

¹ Source: IDC CY - Q2 2013 Hardcopy Peripheral Tracker.

² Based on published product specifications and internal HP analysis of leading printer manufacturers' mobile print offerings as of June 2013.

³ For wireless direct printing, mobile device may require an app or print software. Wireless performance is dependent on physical environment and distance from the printer. Please note that while your mobile device is directly connected to the printer, access to content that requires Internet support (such as web pages or documents stored in the cloud) may not be supported while in HP wireless direct mode.

⁴ For touch-to-print capability, mobile device must support NFC-enabled printing. For a list of supported devices, see hp.com/go/businessmobileprinting.

⁵ Such as the HP LaserJet Enterprise flow MFP M830 or the HP Color LaserJet Enterprise flow MFP M880. In some regions, HP wireless direct and touch-to-print is not included with these models and must be purchased separately.

⁶ Use of HP ePrint Enterprise app at HP ePrint Public Print Locations requires an Internet- and email-capable smartphone or tablet with separately purchased wireless Internet service. Availability and cost of printing vary by location. Visit hp.com/go/ePrintEnterprise for more information.

⁷ HP ePrint Enterprise requires HP ePrint Enterprise server software. App-based option requires Internet- and email-capable BlackBerry smartphone OS 4.5 or newer, iPhone 3G or newer, iPad® and iPod Touch® (2nd gen) devices running iOS 4.2 or later, or Android devices running version 2.1, 2.2 and 2.3, with separately purchased wireless Internet service and the HP ePrint service app. Email-based option requires any email-capable device and authorised email address. Solution works with PCL5/6, PCL3 and PCL3GUI printers (HP and non-HP).

⁸ Available on HP LaserJet MFPs with HP FutureSmart firmware.

⁹ HP Web Jetadmin is free and can be downloaded at hp.com/go/webjetadmin.

¹⁰ The HP Universal Print Driver is free and available for download at hp.com/go/upd.

¹¹ HP FutureSmart firmware is available on select HP LaserJet Enterprise printers and MFPs. Some features enabled by future HP FutureSmart upgrades may not be available on older devices if, for example, physical product characteristics limit the functionality of the new feature. To learn more, visit hp.com/go/futuresmart.

¹² Solutions deployed through the hardware integration pocket may require additional purchase.

¹³ Buyers Laboratory LLC Outstanding Achievement in Security Solutions award, March, 2013. For details, see hp.com/large/ipq/gateway/security_center.

¹⁴ HP Imaging and Printing Security Center must be purchased separately.

¹⁵ HP Instant-on Security is part of HP Imaging and Printing Security Center, which must be purchased separately.

Sign up for updates

hp.com/go/getupdated



Share with colleagues



Rate this document

© Copyright 2014 Hewlett-Packard Development Company, L.P. The information contained herein is subject to change without notice. The only warranties for HP products and services are set forth in the express warranty statements accompanying such products and services. Nothing herein should be construed as constituting an additional warranty. HP shall not be liable for technical or editorial errors or omissions contained herein.

AirPrint and the AirPrint logo are trademarks of Apple® Inc. iOS X iPad, iPhone, and iPod touch are trademarks of Apple® Inc., registered in the U.S. and other countries. Microsoft, SharePoint and Windows are U.S. registered trademarks of Microsoft Corporation.

4AA5-0594EEW, March 2014, Rev. 1

